

PURBROOK PARK SCHOOL

KS4

**Options Booklet
2025**



Name

Tutor Group

CONTENTS

Introduction	3
Choosing Courses	4
Important Dates	5
Subject Criteria	6+7
Core curriculum subject pages	
English Language	8
English Literature	9
Mathematics	10
Religious Studies	11
Extended Core Curriculum subject pages	
Biology	12
Chemistry	13
Physics	14
Combined Science	15
Geography	16
History	17
Spanish	18
Options subject pages	
Art	19
Dance (GCSE)	20
3D Design	21
OCR GCSE Business	22
Drama	23
BTEC Food and Hospitality	24
Cambridge National Engineering	25
Music	26
Cambridge Nationals Sports Studies	27+28
Photography	29
Sociology	30
Textiles	31
Key Deadlines	32

INTRODUCTION TO OPTIONS PROCESS

The aim of this booklet is to help you to prepare for the next important stage of your education.



There are many different types of qualification that are available to you in Years 9, 10 and 11.

When choosing your options, it is important to think about what you're good at and what you enjoy, in order to select the type of qualification that suits you best.

Everyone will study the following examined courses:

- English Language and English Literature
- Mathematics
- Religious Studies
- Combined Science (2 GCSEs) or
Separate Sciences (3 GCSE qualifications)



In addition, you will participate in:

- A non-exam course in Physical Education
- Work Related Learning
- Careers Education and Guidance
- PSHE

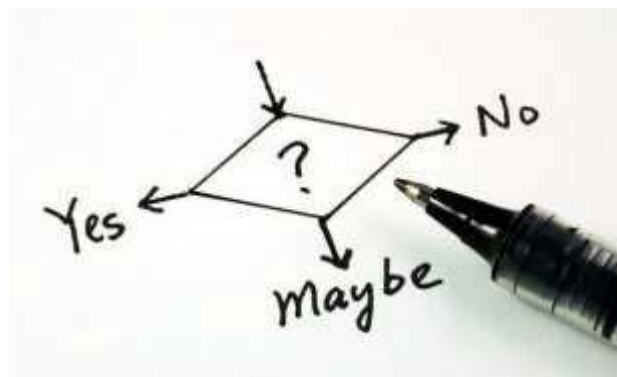
Your choice is of four subjects from the lists (blocks) below. Choose one subject from block A and three from block B. Two reserve choices will need to be selected. These must be different from the 4 subjects that you have selected as your main choices.

Option A	Option B
GCSE Geography GCSE History GCSE Spanish	GCSE Music GCSE Art GCSE Drama GCSE 3D Design GCSE Photography GCSE Textiles GCSE Sociology GCSE Spanish GCSE History GCSE Geography GCSE Dance GCSE Business Studies BTEC Hospitality & Catering Cambridge National Engineering Cambridge National Sport

CHOOSING COURSES

1. Who chooses?

Think about the subjects you like and the subjects you are good at; this is an important starting point. Ultimately pupils should choose their subjects. However talk with your parents and your teachers. Independent advice (see Careers/Work-Related learning information) is also available at school and can be booked).



2. What must I think about before I decide?

Think about the qualifications you will need for the job you want or for the next stage of your education, such as Sixth Form.

You must have a balanced set of courses in case you change your mind about your future, which is perfectly normal and happens more often than you might think.

3. Who will help me make up my mind?

Speak to as many people as you can e.g. your parents, subject teachers, form tutor, RSL and careers advisors.

4. What do I do next?

Read this booklet carefully. Show it to your parents and talk to them about your choices. On **Thursday 3rd April 2025** there will be an Options Evening, where you will have the opportunity to find out as much information about the courses as possible.

Please remember we may not be able to give everyone their choices. This is why we ask for four reserve choices. You will need to give this careful consideration as you may be asked to study these reserve choices and, in rare cases, all four of them.

When you have reached a decision about your Year 9 courses:

1. When you have done your research and are happy with your final decisions complete the form on EduLink.
2. Ensure you meet the deadline of no later than: **Friday 25th April 2025**

**There are several important dates for
parents of Year 8 pupils this term:**

Monday 10th March 2025

Year 8 Options Assembly

Monday 17th -28th March 2025

Taster Sessions

Thursday 3rd April 2025

Options Fair for all Year 8 pupils and parents

Friday 25th April 2025

Deadline for completion of options form



SUBJECT CRITERIA

SUBJECT	QUALIFICATION	MAXIMUM NUMBER OF PLACES AVAILABLE
Spanish	GCSE	Unlimited
Geography	GCSE	Unlimited
History	GCSE	Unlimited

SUBJECT CRITERIA

Subject	Qualification	Max Number of places available
3D Design	GCSE	20
Art	GCSE	50
Photography	GCSE	60
Textiles	GCSE	40
Cambridge National Engineering	Vocational	20
GCSE Business	GCSE	30
Cambridge National Sport	Vocational	Unlimited
GCSE Dance	GCSE	50
GCSE Drama	GCSE	50
BTEC Hospitality & Catering	Vocational	36
GCSE Music	GCSE	40
GCSE Sociology	GCSE	50

- 1. Pupils are only allowed to select two Vocational subjects.**
- 2. Pupils are only allowed to select one from Art, 3D Design, Photography, Cambridge National Engineering or Textiles.**

GCSE ENGLISH LANGUAGE

SYLLABUS: 8700

EXAM BOARD: AQA

EXAM BOARD WEBSITE: www.aqa.org.uk/subjects/english/gcse/english-language-8700

WHAT WILL PUPILS STUDY?

Over the course of your GCSE in English Language, you will study towards two exams testing the core Assessment Objectives (AOs). You will read a range of fiction and non-fiction texts from across the ages and will explore them critically.

AO1 - you will learn to identify and interpret explicit and implicit ideas from a variety of texts and to select and synthesise evidence and to use quotations effectively.

AO2 - you will learn to explain, comment on and analyse how writers use language and structure to achieve effects and to influence their readers, using relevant subject terminology to support your points of view.

AO3 - you will compare writers' ideas and perspectives, as well as how they are conveyed, across two or more texts, looking at similarities and differences between them.

AO4 - you will evaluate texts critically and support this with appropriate textual references.

AO5 - you will write a variety of fiction and transactional, non-fiction texts and will learn to communicate clearly, effectively and imaginatively, selecting and adapting your tone, style and register for different forms, purposes and audiences. You will also learn how to structure your texts for maximum impact.

AO6 - you will learn to use a range of vocabulary and sentence structures for clarity, purpose and effect, with accurate spelling and punctuation

HOW IS THE COURSE ASSESSED? 100% Examination

Paper 1: Explorations in Creative Reading and Writing (1 hour 45 minutes) 50% of the GCSE

Paper 2: Writers' Viewpoints and Perspectives (1 hour 45 minutes) 50% of the GCSE

RECOMMENDED RESOURCES & SUPPORT

LEAD PRACTITIONER CONTACT: Siobhan Stott – sstott@purbrook.hants.sch.uk

BBC Bitesize; AQA website; revision guides (see your teacher for a list)

GCSE ENGLISH LITERATURE

SYLLABUS: 8702

EXAM BOARD: AQA

EXAM BOARD WEBSITE : <http://www.aqa.org.uk/subjects/english/gcse/english-literature-8702>

WHAT WILL PUPILS STUDY?

Over the course of your GCSE in English Literature, you will study a range of different texts from a variety of different contexts. You will study towards two exams testing the core AOs (Assessment Objectives). You will scrutinise and enjoy at least one text from each of the following categories:

Shakespeare, 19th Century Novel, Modern Texts and Poetry.

The individual set texts within these categories will be determined by the class teacher in Year 10. In past years most classes have studied: Shakespeare- *Romeo and Juliet*, 19th Century Novel- *The Strange Case of Dr Jekyll and Mr Hyde*, Modern Texts- *An Inspector Calls* or *Blood Brothers* and Poetry- *Power and Conflict*.

AO1 - you will read a variety of texts and be given the opportunity to respond to them, maintaining a critical style and developing a personal response. You will be required to use textual reference (quotations where possible) to support and illustrate your interpretations and ideas.

AO2 - you will analyse the language, form and structure used by writers to create meanings and effects, using relevant subject terminology where it is appropriate.

AO3 - you will be taught to show an understanding of the relationship between texts and the contexts in which they were written, including an understanding of human nature and human life.

AO4 - you will use a range of vocabulary and sentence structures for clarity, purpose and effect, with accurate spelling and punctuation.

HOW IS THE COURSE ASSESSED?

100% examination

Paper 1: Shakespeare and the 19th century novel (1 hour 45 minutes) - 40% of the GCSE Paper

2: Modern Texts and Poetry (2 hours 15 minutes) - 60% of the GCSE

RECOMMENDED RESOURCES & SUPPORT

LEAD PRACTITIONER CONTACT: Siobhan Stott – stott@purbrook.hants.sch.uk

BBC Bitesize; AQA website; revision guides (see your teacher for a list)

GCSE MATHS

SYLLABUS: EXAM

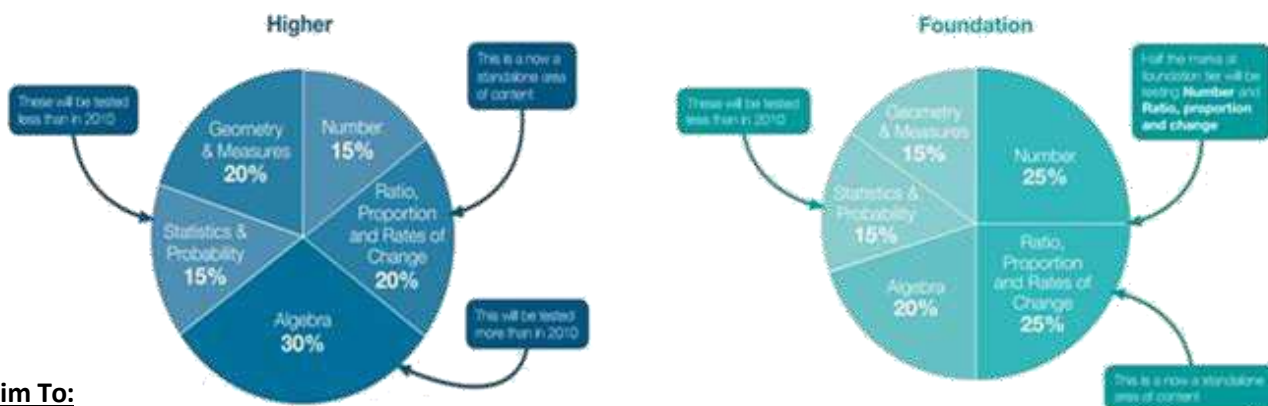
BOARD:

EXAM BOARD WEBSITE : <https://qualifications.pearson.com/en/home.html>

1MA0

EDEXCEL

WHAT WILL PUPILS STUDY?



We Aim To:

- Develop fluent knowledge, skills and understanding of mathematical methods and concepts
- Acquire select and apply mathematical techniques to solve problems
- Reason mathematically, make deductions and inferences, and draw conclusions
- Comprehend, interpret and communicate mathematical information in a variety of forms

HOW IS THE COURSE ASSESSED?

Foundation (grades 1-5)	Paper 1 Non-calculator 33.3% weighting 1 hour and 30 minutes 80 marks	Paper 2 Calculator 33.3% weighting 1 hour and 30 minutes 80 marks	Paper 3 Calculator 33.3% weighting 1 hour and 30 minutes 80 marks
	Paper 1 Non-calculator 33.3% weighting 1 hour and 30 minutes 80 marks	Paper 2 Calculator 33.3% weighting 1 hour and 30 minutes 80 marks	Paper 3 Calculator 33.3% weighting 1 hour and 30 minutes 80 marks
Higher (grades 4-9)	Paper 1 Non-calculator 33.3% weighting 1 hour and 30 minutes 80 marks	Paper 2 Calculator 33.3% weighting 1 hour and 30 minutes 80 marks	Paper 3 Calculator 33.3% weighting 1 hour and 30 minutes 80 marks

RECOMMENDED RESOURCES & SUPPORT

LEAD TEACHER CONTACT: Richard James — rjames@purbrook.hants.sch.uk

ALL PUPILS MUST HAVE A SCIENTIFIC CALCULATOR

<https://vle.mathswatch.co.uk/vle/>

<https://qualifications.pearson.com/en/home.html>

<https://idp.activeteachonline.com>

GCSE RELIGIOUS STUDIES

SYLLABUS:	Religious Studies Route A
EXAM BOARD:	WJEC EDUQAS GCSE (9-1)
EXAM BOARD	http://www.eduqas.co.uk/qualifications/religious-studies/gcse/

WHAT WILL PUPILS STUDY?

The GCSE course starts in Year 9, and investigates 'Ultimate Questions' for example 'Why does evil exist?'. You will study topics that explain the diversity of life and religion in the modern world. The course will improve philosophical thinking skills and the ability to think outside the box. You will develop communication skills and learn to clearly express your views and increase your self-confidence.

COMPONENT 1

Issues of Relationships: Adultery, divorce, cohabitation, commitment, contraception, gender equality, responsibilities and roles.

Issues of Life and Death: Afterlife, environmental, sustainability, euthanasia, evolution, abortion, quality of life, sanctity of life and soul.

Issues of Good and Evil: Good/evil, forgiveness, free will, justice, morality, punishment, sin and suffering.

Issues of Human Rights: Censorship, discrimination, extremism, human rights, personal, conviction, prejudice, relative and absolute poverty and social justice.

COMPONENT 2 — Study of Christianity

The nature of God, Creation, Jesus Christ, Salvation, The Afterlife, Forms of Worship, Sacraments, Pilgrimage and Celebration, Christianity in Britain and the Church in the Local Community, The Worldwide Church.

COMPONENT 3 — Study of Judaism

Synagogue, Shekinah, Kosher, Torah, Mitzvot, Messiah, Covenant.

HOW IS THE COURSE ASSESSED?

Candidates will sit three written examinations in total. All examination questions will be compulsory and will focus on knowledge, understanding and evaluation.

Paper 1 (50%) 2 hours: 1. Issues of relationships, 2. Issues of life and death, 3. Issues of good and evil, 4. Issues of Human rights.

Paper 2 (25%) 1 hour: Study of Christianity - Beliefs and teachings and practices.

Paper 3 (25%) 1 hour: Study of Judaism - Beliefs and teachings and practices.

RECOMMENDED RESOURCES & SUPPORT :

LEAD TEACHER CONTACT: Debra Mason Dmason@purbrook.hants.sch.uk

WJEC EDUQAS GCSE (9-1) Religious Studies Route A textbook ISBN: 9781510480247

<https://www.amazon.co.uk/WJEC-Eduqas-Religious-Studies-Route/dp/1510480242>

GCSE BIOLOGY

SYLLABUS: 8461

EXAM BOARD: AQA

EXAM BOARD WEBSITE: <https://www.aqa.org.uk/subjects/biology/gcse/biology-8461/specification>

WHAT WILL PUPILS STUDY?

You will study the following topics over three years.

1. Cell Biology
2. Organisation
3. Infection and Response
4. Bioenergetics
5. Homeostasis and Response
6. Inheritance, Variation and Evolution
7. Ecology

HOW IS THE COURSE ASSESSED?

You will be assessed at the end of Year 11. There will be two 1 hour and 45-minute exams with each worth 50% of your final grade.

Exams have both Foundation (Grades 1-5) and Higher tiers (Grades 4-9). Exams are made up of multiple choice, short answer and long answer questions.

Biology Paper 1 Topics 1 – 4: Cell Biology; Organisation; Infection and Response; and Bioenergetics .

Biology Paper 2 Topics 5 – 7: Homeostasis and Response; Inheritance, Variation and Evolution; and Ecology.

RECOMMENDED RESOURCES & SUPPORT

LEAD PRACTITIONER CONTACT:

Danielle Davies – ddavies@purbrook.hants.sch.uk

www.freeescience.co.uk

www.tassomai.com

<https://cognitoedu.org/home>

<https://senecalearning.com/en-GB/>

<https://www.savemyexams.com/>

GCSE CHEMISTRY

SYLLABUS: 8462

EXAM BOARD: AQA

EXAM BOARD WEBSITE: <https://www.aqa.org.uk/subjects/chemistry/gcse/chemistry-8462/specification>

WHAT WILL PUPILS STUDY?

You will study the following topics over three years.

1. Atomic structure and the periodic table
2. Bonding, structure, and the properties of matter
3. Quantitative chemistry
4. Chemical changes
5. Energy changes
6. The rate and extent of chemical change
7. Organic chemistry
8. Chemical analysis
9. Chemistry of the atmosphere
10. Using resources

HOW IS THE COURSE ASSESSED?

You will be assessed at the end of Year 11. There will be 2 x 1 hour and 45-minute exams with each worth 50% of your final grade.

Exams have both Foundation (Grades 1- 5) and Higher tiers (Grades 4 - 9). Exams are made up of multiple choice, short answer and long answer questions.

Paper 1 - Topics 1 -4 - 1 hour and 45 minutes

Paper 2 - Topics 5 - 7 - 1 hour and 45 minutes

RECOMMENDED RESOURCES & SUPPORT

LEAD PRACTITIONER CONTACT:

Danielle Davies – ddavies@purbrook.hants.sch.uk

www.freeescience.co.uk

www.tassomai.com

<https://cognitoedu.org/home>

<https://senecalearning.com/en-GB/>

<https://www.savemyexams.com/>

GCSE PHYSICS

SYLLABUS: 8463

EXAM BOARD: AQA

EXAM BOARD WEBSITE: <https://www.aqa.org.uk/subjects/physics/gcse/physics-8463/specification>

HOW IS THE COURSE ASSESSED?

You will be assessed at the end of Year 11. There will be 2 x 1 hour and 45-minute exams with each worth 50% of your final grade.

Exams have both Foundation (Grades 1 - 5) and Higher tiers (Grades 4 - 9). Exams are made up of multiple choice, short answer and long answer questions.

Paper 1: Energy, electricity, particle model and atomic structure 1hour 45 minutes

Paper 2: Forces, waves, magnetism and space 1 hour 45 minutes

Graded 1 - 9

WHAT WILL PUPILS STUDY?

You will study the following topics over three years.

The qualification covers:

1. Forces
2. Energy
3. Waves
4. Electricity
5. Magnetism and electromagnetism
6. Particle model of matter
7. Atomic structure
8. Space Physics

RECOMMENDED RESOURCES & SUPPORT

LEAD PRACTITIONER CONTACT:

Danielle Davies – ddavies@purbrook.hants.sch.uk

www.freeescience.co.uk

www.tassomai.com

<https://cognitoedu.org/home>

<https://senecalearning.com/en-GB/>

<https://www.savemyexams.com/>

GCSE COMBINED SCIENCE TRILOGY

SYLLABUS: 8464

EXAM BOARD: AQA

EXAM BOARD WEBSITE : <https://www.aqa.org.uk/subjects/science/gcse/science-8464/specification>

WHAT WILL PUPILS STUDY?

You will study the following topics over three years.

Biology

Cell biology; Organisation; Infection and response; Bioenergetics; Homeostasis and response; Inheritance, Variation and evolution; Ecology.

Chemistry

Atomic structure and the periodic table; Bonding, structure and the properties of matter; Quantitative Chemistry; Chemical changes; Energy changes; The rate and extent of chemical change; Organic chemistry; Chemical analysis; Chemistry of the atmosphere and Using resources.

Physics

Energy; Electricity; Particle model of matter; Atomic structure; Forces; Waves; Magnetism and electromagnetism.

HOW IS THE COURSE ASSESSED?

You will be assessed at the end of Year 11. There will be 6 exams in total.

Exams have both Foundation (Grades 1 - 5) and Higher tiers (Grades 4 - 9). Exams are made up of multiple choice, short answer and long answer questions.

Exams: Each exam is 1 hour 15 minutes

Biology Paper 1 Biology topics 1 – 4: Cell Biology; Organisation; Infection and response and Bioenergetics.

Biology Paper 2 Biology topics 5 – 7: Homeostasis and response; Inheritance, variation and evolution and Ecology.

Chemistry Paper 1 Chemistry topics 8 – 12: Atomic structure and the periodic table; Structure & Bonding; Properties of matter; Quantitative chemistry; Chemical changes and Energy changes.

Chemistry Paper 2 Chemistry topics 13 – 17: The rate and extent of chemical change; Organic chemistry; Chemical analysis; Chemistry of the atmosphere and Using resources.

Physics paper 1 Physics topics 18 – 21: Energy; Electricity; Particle model of matter; and Atomic structure.

Physics Paper 2 Physics topics 22 – 24: Forces; Waves; Magnetism and electromagnetism.

RECOMMENDED RESOURCES & SUPPORT

LEAD PRACTITIONER CONTACT: Danielle Davies –

ddavies@purbrook.hants.sch.uk www.freeescience.co.uk

www.tassomai.com

<https://cognitoedu.org/home>

<https://senecalearning.com/en-GB/>

<https://www.savemyexams.com/>

GCSE GEOGRAPHY

SYLLABUS: GCSE Geography 8035

EXAM BOARD: AQA

EXAM BOARD WEBSITE : <http://www.aqa.org.uk/subjects/geography/gcse/geography-8035>

WHAT WILL PUPILS STUDY?

Living with the physical environment

Section A: The challenge of natural hazards including Natural Hazards, Tectonic Hazards, Weather Hazards and

Climate Change

Section B: The living world including Tropical Rainforests and Hot Deserts or Cold environment

Section C: Physical landscapes in the UK: Two topics from Coastal Landscapes, Rivers and Glaciation

Challenges in the human environment

Section A: Urban issues and challenges

Section B: The changing economic world

Section C: The challenge of resource management which includes food, water and energy

Geographical applications

Section A: An Issue evaluation including critical thinking and problem solving skills

Section B: Fieldwork which will include two field work enquiries based on primary data collected in two contrasting visits

Geographical skills

Geographical skills Pupils are required to develop and demonstrate a range of geographical skills, including cartographic, graphical, numerical and statistical skills, throughout their study of the specification.

Skills will be assessed in all three written exams. Ordnance Survey (OS) maps or other map extracts may be used in any of the three exams.

HOW IS THE COURSE ASSESSED?

Pupils will sit **three** written exams:

- Unit 1: Living with the physical environment 35% of the total. **Exam length 1 hour 30 minutes**
- Unit 2: Challenges in the Human environment 35% of the total. **Exam length 1 hour 30 minutes**
- Unit 3 Geographical Application 30% of the total. **Exam length 1 hour 15 minutes**

RECOMMENDED RESOURCES & SUPPORT

LEAD TEACHER CONTACT: Katie Shears - kshears@purbrook.hants.sch.uk

Support sessions will be available throughout Year 11 to help pupils to revise. The Geography team have also produced a number of guides and support sheets to aid pupil learning and revision

GCSE Bitesize: <https://www.bbc.com/education/examspecs/zy3ptyc>

Useful website that has a range of pod casts: <http://www.geographypods.com/>

GCSE HISTORY

SYLLABUS: J411

EXAM BOARD: OCR

EXAM BOARD WEBSITE : www.ocr.org.uk/qualifications/gcse/history-b-schools-history-project-j411-from-2016/

WHAT WILL PUPILS STUDY?

Paper 1 – British History

Section A – Thematic Study: The People's Health, c.1250-Present. Pupils study the changes in the health of the British people by studying four distinct periods, The Middle Ages, Early Modern Period, Industrial Period and Modern period. They consider the Living conditions of people, the outbreak and reaction to epidemics and the role of government in promoting good health

Section B – British Depth Study: The Elizabethans, 1580-1603. Pupils study the government of Elizabeth, The Catholics in England, Daily Lives, Popular culture and the wider world

Paper 2 – History Around us

A site study of Portchester Castle: Pupils study Portchester castle, including a site visit, and consider why the castle was created and the different ways it has changed

Paper 3 – World History

Section A – Period Study: The Making of America, 1789-1900. Pupils study the early expansion of America, The Civil War and its consequences, the expansion onto the plains and the destruction of the Plains Indians and the expansion of cities by 1900

Section B – World Depth Study: Living under Nazi Rule, 1933-1945. Pupils study the Nazi consolidation of power, the use of terror and propaganda, the daily lives of German people, the impact of World War Two which includes studying the impact in occupied countries.

HOW IS THE COURSE ASSESSED?

Pupils sit three exam at the end of the course in Year 11:

Paper 1 British History is **40%** of the overall mark (**80 marks**) *Exam length 1 hour 45 minutes*

Paper 2 History Around us is **20%** of the overall mark (**50 marks**) *Exam length 1 hour*

Paper 3 World History is **40%** of the overall mark (**80 marks**) *Exam length 1 hour 45 minutes*

RECOMMENDED RESOURCES AND SUPPORT

LEAD PRACTITIONER CONTACT: Michael Bruce

mbruce@purbrook.hants.sch.uk

CGP History GCSE OCR B Revision Guide

OCR GCSE (9-1) History B Schools History Project (Hodder Education)

GCSE SPANISH

EXAM BOARD: Pearson

EXAM BOARD WEBSITE: <https://qualifications.pearson.com/en/qualifications/edexcel->

WHAT WILL PUPILS STUDY?

During your three year study of Spanish at GCSE you will cover a range of interesting and engaging topics that will open your eyes to not just Spanish culture but Latin America as well. We will use your base knowledge of Spanish from year 7 and 8, to build and develop your understanding of more complex ideas through the following key themes.

The main themes we cover are

- **My personal world**
- **Lifestyle and wellbeing**
- **My neighbourhood**
- **Media and technology**
- **Studying and my Future**
- **Travel and Tourism**



All of these themes will be explored through the practice of the 4 key skills that are needed to learn a language: Listening, Speaking, Reading and Writing. We will have the opportunity to engage in debate about culture and society and compare English Culture with that of the Spanish Speaking world. Taking Spanish at GCSE is a fantastic opportunity to gain not just an understanding of a language but a pathway into the culture of multiple countries, not just Spain.

HOW IS THE COURSE ASSESSED?

4 key skills all tested and weighted equally to reach your final grade.

Students can be entered for a foundation (0-5) or a higher (4-9) paper depending on their ability.

Paper 1 – Speaking 25% of overall grade – 7-12 minutes

Paper 2 – Listening and Understanding 25% of overall grade – 45/60 minutes

Paper 3 – Reading and Understanding 25% of overall grade – 45/60 minutes

Paper 4 – Writing in Spanish – 25 % of overall grade – 1hr and 15 minutes/ 1 hr and 20 minutes

RECOMMENDED RESOURCES & SUPPORT

LEAD TEACHER CONTACT: Fiona Turner : fturner@purbrook.hants.sch.uk

Pearson Revise Edexcel GCSE Spanish: Revision Workbook - for 2026 and 2027 exams (new specification)

Collins Easy learning Spanish dictionary

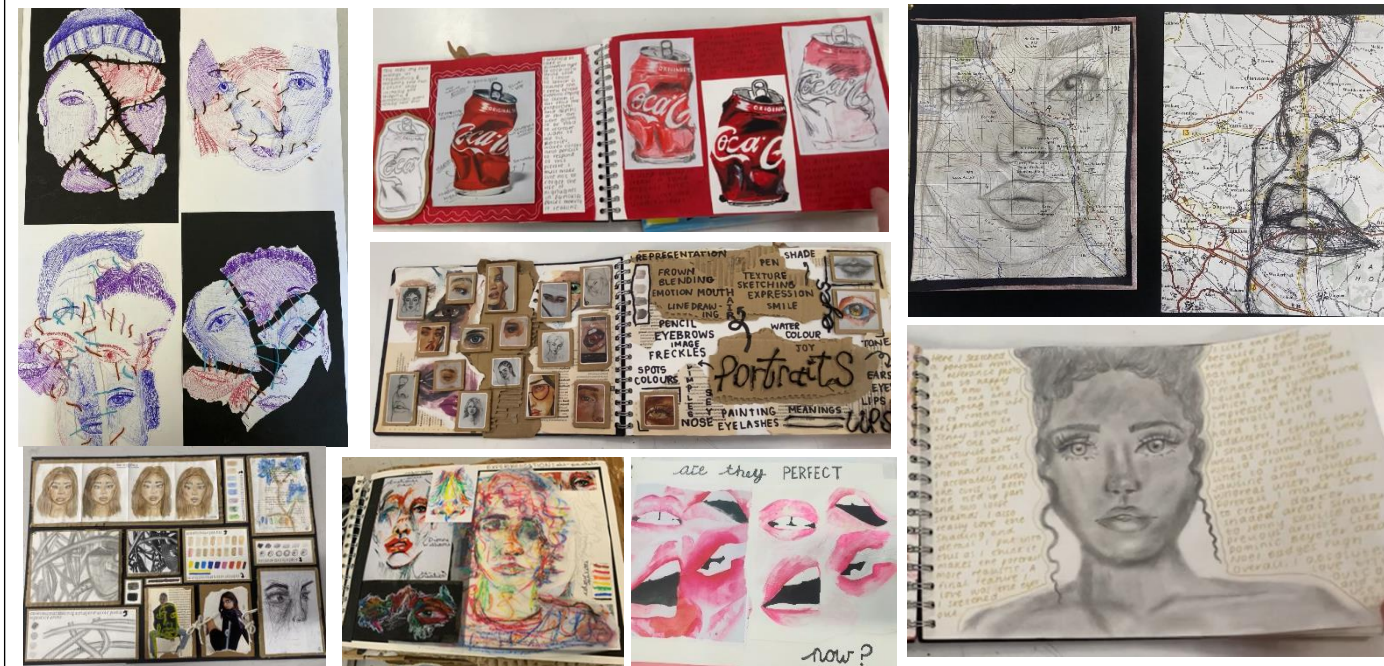
GCSE ART AND DESIGN

EXAM/SYLLABUS: ART & DESIGN

EXAM BOARD WEBSITE : <http://www.aqa.org.uk/subjects/art-and-design>

WHAT WILL PUPILS STUDY?

You will learn a variety of painting, drawing and 3d construction (paper/clay modelling) techniques and have the opportunity to explore other materials that will allow you to build up an impressive skill set and portfolio of work. Units of work are based around 'Identity', 'Self' and an externally set unit of work. Each of these units will be made up of contextual studies looking at either artists, art movements or cultures that will help inform your observations and planning your own large scale artistic outcomes. You will be expected to explore a range of techniques including painting, drawing, making, Photography, collage and clay work.



HOW IS THE COURSE ASSESSED? HOW IS THE COURSE ASSESSED?

EACH UNIT IS BASED ON 4 ASSESSMENT OBJECTIVES

Year 10 - 60% coursework portfolio, Year 11 - 40% 12 week controlled assessment



RECOMMENDED RESOURCES & SUPPORT:

LEAD TEACHER CONTACT: Fiona Cumbo fcumbo@purbrook.hants.sch.uk

Building up your own Pinterest inspiration will prepare you for future projects and post – 16 should you choose this option) Follow our school page and individual specialisms from the links below: <https://www.pinterest.co.uk/saltmiss/> <https://www.pinterest.co.uk/MrsABenton/> <https://www.pinterest.co.uk/martinw0617/>

Instagram: Adtandphotographyatpps

GCSE DANCE

SYALLBUS: GCSE DANCE

EXAM BOARD: AQA

EXAM BOARD WEBSITE : <https://www.aqa.org.uk/subjects/dance/gcse/dance-8236/specification>

WHAT WILL PUPILS STUDY?

Pupils will study 3 main areas of dance which include performance, choreography and dance theory. They will take part in technique classes in a variety of styles but with the main style being Contemporary. Pupils are required to study and have an in depth knowledge of the 6 professional works that make up the GCSE set anthology.

The six professional works the pupils will study are:

- **Artificial Things.** Performed by Stopgap Dance Company. Choreographed by Lucy Bennett.
- **A Linha Curva.** Performed by Rambert Dance Company. Choreographed by Itzik Galili.
- **Infra.** Performed by The Royal Ballet. Choreographed by Wayne McGregor.
- **Shadows.** Performed by Phoenix Dance Theatre. Choreographed by Christopher Bruce.
- **Within Her Eyes.** Performed by James Cousins Company. Choreographed by James Cousins.
- **Emancipation of Expressionism.** Performed by Boy Blue Entertainment. Choreographed by Kenrick H2O Sandy.

Study of the works will inspire pupils to develop their own **performance, creative** and **choreographic** practice, at the same time as the **knowledge, understanding and analytical skills** required for **critical appreciation**.



HOW IS THE COURSE ASSESSED?

The course consists of 2 units:

Component 1: Performance and Choreography.

Pupils will learn set phrases and perform them through a **solo** performance (Approximately **one minute** in duration).

Pupils will learn a **duet/trio** to perform (between 3 and 5 minutes in duration and choreographed by your teacher)

Performance is 30% of GCSE grade

Pupils will also create a **solo or group** piece which includes the set phrases throughout

Choreography is 30% of GCSE grade

Component 2: Dance Appreciation. Pupils will gain knowledge and understanding of choreographic processes and performing skills. They will be able to have critical appreciation of their own work as well as the 6 professional works that make up the GCSE anthology

Dance Appreciation is 40% of GCSE grade which is assessed through a written exam: 1 hour 30 minutes in duration

RECOMMENDED RESOURCES & SUPPORT

LEAD TEACHER CONTACT: Amy Taylor ataylor@purbrook.hants.sch.uk

<https://www.aqa.org.uk/subjects/dance/gcse/dance-8236/specification>

GCSE 3D DESIGN

SYLLABUS: 8205
EXAM BOARD: AQA
EXAM BOARD WEBSITE : www.aqa.org.uk

WHAT WILL PUPILS STUDY?

Three-dimensional design is defined as the design, prototyping and modelling or the making of primarily functional and aesthetic products and objects, drawing upon creative and practical skills. You will study a range of contextual references from traditional, modern and contemporary artists and sculptors and learn skills used. All projects include art and sculpture from different periods of time and you will learn about how they are used by others. You will also learn a variety of 2D techniques, but primarily you will use a variety of 3D techniques to produce your outcomes. Skills and techniques and techniques used include: Drawing, Painting, Making Maquettes in a variety of media, Photography, Photoshop, Lazer Cutting, 3D Printing.



HOW IS THE COURSE ASSESSED?

EACH UNIT IS BASED ON 4 ASSESSMENT OBJECTIVES

Year 10 - 60% coursework portfolio, Year 11 - 40% 12 week controlled assessment



RECOMMENDED RESOURCES & SUPPORT

LEAD TEACHER CONTACT: Fiona Cumbo - fcumbo@purbrook.hants.sch.uk

Building up your own Pinterest inspiration will prepare you for future projects and post – 16 should you choose this option). Follow our school page and individual specialisms from the link below:

<https://www.pinterest.co.uk/martinw0617/>

Instagram: Atdandphotographyatpps

OCR GCSE Business

SYLLABUS:	OCR GCSE BUSINESS
EXAM BOARD:	OCR
EXAM BOARD WEBSITE	https://www.ocr.org.uk/qualifications/gcse/business-j204-from-2017/

WHAT WILL PUPILS STUDY?

When you leave school or college you will probably be working for a business or other organisation. After studying Business, you will have an insight into just how businesses operate, including how to set up a business of your own if you wanted to.

- This is a practical course, using real businesses as examples
- Learn skills to help you in decision making
- Be one step ahead in understanding how businesses operate.

In Business we study the OCR Business GCSE syllabus. Choosing this subject will allow pupils to better understand and succeed in the world of business. pupils will learn skills such as evaluation and problem solving which will be useful in a number of other subjects and will learn how to be able to make informed decisions and put forward arguments to persuade others

What you will study in OCR GCSE (9–1) Business:

- The purpose and role of a business, what makes a successful entrepreneur and spotting an opportunity.
- Marketing, including advertising, development of products, setting the best price]
- Recruitment, including how businesses get the right staff and keep them working well
- Business structures, including the different ways to set up a business
- Finance, including how businesses get the money to set up and operate and how they make a profit.
- Business operations, including how businesses produce the things we buy
- Influences on business, including ethical and environmental considerations and the economic climate and globalisation

The specification of the course expects pupils to be able to use a range of quantitative skills and maths techniques and apply them to business contexts and a minimum of 10% of the overall marks are assessed in this way. pupils should be able to calculate percentages, averages and profit margins and interpret data such as graphs and charts.

HOW IS THE COURSE ASSESSED?

The GCSE is assessed through two 90-minute exams. Both papers contain multiple choice questions as well as short answer questions and extended writing questions (maximum 9 marks) to test the student's ability to explain why they made their decisions. The course and exams are based on current case studies and use real businesses as examples.

RECOMMENDED RESOURCES:

Pupils will be guided to use a number of online resources which can be accessed at home and at school.

LEAD TEACHER CONTACT: Mrs J Mills - jmills@purbrook.hants.sch.uk

GCSE DRAMA

SYLLABUS: DRAMA GCSE YRS 9—10
EXAM BOARD: AQA
EXAM BOARD WEBSITE : <http://www.aqa.org.uk/subjects/drama/gcse/drama-8261>

WHAT WILL PUPILS STUDY?

Component 1: Understanding drama. This component is a written exam in which you will be assessed on your knowledge and understanding of how drama and theatre is developed and performed, including in connection to a set play and on your ability to analyse and evaluate the live theatre work of others. You will have 1 hour and 45 minutes to answer the paper. The paper is divided into three compulsory sections: • In Section A you will answer four multiple-choice questions on professional theatre maker roles and/or terminology. In section B you will answer short and extended questions on one set play. In Section C you will answer one question (from a choice) on the work of theatre makers in a single live production.

Component 2: Devising Drama. This is a practical component in which you will be assessed on your ability to create and develop ideas to communicate meaning for theatrical performance. You will apply theatrical skills to realise artistic intentions in live performance and analyse and evaluate your own work. It is marked by teachers and moderated by AQA. For this component you will be required to complete the following two assessment tasks: • Produce an individual Devising log documenting the devising process • contribute to a final devised duologue or group performance. The Devising log is marked out of 60. Your contribution to the final devised performance is marked out of 20.

Component 3. This component is a practical component in which you will be assessed on your ability to apply theatrical skills to realise artistic intentions in live performance. It is marked by a visiting external examiner. For this component you must complete two assessment tasks: • Study and present a key extract (monologue, duologue or group performance) • study and present a second key extract (monologue, duologue or group performance).

HOW IS THE COURSE ASSESSED?

Assessment is broken down into the following areas:

Practical Coursework - 60%

Marks are awarded on the practical examination of performance, preparation and rehearsal time.

Marks are also awarded for your written records on your development of acting skills and responses to final performance (portfolio)

Written Examination Paper - 40%

At the end of Year 11 a written paper is taken which tests you on three areas:

Understanding of drama and theatre terminology

The study of a set play - from the point of view of a performer.

The study of a live production seen during the course.

RECOMMENDED RESOURCES & SUPPORT

TEACHER CONTACT: Nici Shepherd - nshepherd@purbrook.hants.sch.uk

GCSE Drama Bitesize website to help you with developing understanding of the key Drama skills and techniques needed for the GCSE course: <https://www.bbc.co.uk/education/subjects/zbckjxs>

CAMBRIDGE NATIONAL DESIGN ENGINEERING

SYLLABUS: OCR Level 1/Level 2 Cambridge Nationals Engineering Design

EXAM BOARD: OCR Level 1/Level 2 Cambridge Nationals

EXAM BOARD WEBSITE : <https://www.ocr.org.uk/qualifications/cambridge-nationals/engineering-design-level-1-2-j822/>

WHAT WILL THE PUPILS STUDY?

Valuable practical skills in engineering design that are highly sought after in the workplace. Gain a deep understanding of the design process and the use of 2D and 3D design techniques to meet design specifications. Communicating engineering design ideas and designing new products to meet a design brief.

Unit R038 Principles of engineering design Examined, mandatory unit - Topics include:

- Updated to include wider range of different design methodologies; analysis of existing products now covered using ACCESSFM
- Similar content but with more definition across specific design criteria
- Some elements relating to influences on engineering product design taken from old specification
- Most elements relating to scales of production, commercial production methods, legislation and end of life taken from old specification
- Better definition of the specific features of engineering drawings and their role in engineering design; also includes reference to CAD

R039 Communicating designs NEA, mandatory unit - Topics include:

Manual production of freehand sketches

Production of engineering drawings

Use of computer aided design (CAD)

R040 Design, evaluation and modelling NEA, mandatory unit - Topics include:

- Product evaluation
- Modelling design ideas

HOW IS THE COURSE ASSESSED?

Made up of three mandatory units:

Unit R038: Principles of engineering design

1 hour 15 minute written examination 70 marks (80 UMS) OCR-set and marked Calculators are allowed in this exam

Unit R039: Communicating designs

OCR-set assignment 60 marks (60 UMS)

Unit R040: Design, evaluation and modelling

OCR-set assignment 60 marks (60 UMS)

RECOMMENDED RESOURCES & SUPPORT

LEAD TEACHER CONTACT: Fiona Cumbo - fcumbo@purbrook.hants.sch.uk

Building up your own Pinterest inspiration will prepare you for future projects and post – 16 should you choose this option). Follow our school page and individual specialisms from the link below:

<https://www.pinterest.co.uk/martinw0617/>

Instagram: Adtandphotographyatpps

GCSE MUSIC

SYLLABUS: Music (9 - 1) - J536
EXAM BOARD: OCR
EXAM BOARD WEBSITE : <http://www.ocr.org.uk>

WHAT WILL PUPILS STUDY?

Area of Study 1: My Music - Learners will practise and learn to perform one or more piece(s) for their instrument of an appropriate level of difficulty. Learners will also compose a piece of their choice.

Area of Study 2: Concerto Through Time - Learners will study and develop an understanding of what a concerto is and the way it has developed through time as well as the instruments that have been used for the solo part in the concerto. The role of the soloist(s) will be studied during this unit and we will explore the relationship between the soloist(s) and the orchestral accompaniment

Area of Study 3: Rhythms of the World - Learners will study the traditional rhythmic roots from four geographical regions of the world: India and Punjab, Eastern Mediterranean and Middle East, Africa and South America.

Area of Study 4: Film Music - Learners will study a range of music used for films including: music that has been composed specifically for a film; music from the Western Classical tradition that has been used within a film and music that has been composed as a soundtrack for a video game.

Area of Study 5: Conventions of Pop - Learners will study a range of popular music from the 1950s to the present day, focussing on: Rock 'n' Roll of the 1950s and 1960s; Rock Anthems of the 1970s and 1980s; Pop Ballads of the 1970s, 1980s and 1990s; Solo Artists from 1990 to the present day.

HOW IS THE COURSE ASSESSED?

Content Overview

Performance on learner's chosen instrument

Composition 1 to brief by pupil

Ensemble Performance

Composition 2 to OCR set brief

Listening exam paper

Assessment Overview

Integrated Portfolio

60 Marks Non-exam

assessment

Practical

component 60

Marks Non-exam

assessment

Exam Paper

30%

of total GCSE

30%

of total GCSE

40%

of total GC

RECOMMENDED RESOURCES & SUPPORT

LEAD TEACHER CONTACT: AMY TAYLOR - ataylor@purbrook.hants.sch.uk

<http://www.ocr.org.uk/qualifications/gcse-music-j535-from-2012/> - useful past papers and revision documents

<http://www.ocr.org.uk/Images/71427-specification.pdf> - a handy breakdown of the GCSE Music course

PE – CNAT SPORT STUDIES

SYLLABUS: Cambridge National Sports Studies

EXAM BOARD: OCR

EXAM BOARD WEBSITE : <https://www.ocr.org.uk/qualifications/cambridge-nationals/sport-studies-level-1-2-j829/>

WHAT WILL PUPILS STUDY IN VOCATIONAL SPORT?

A vocational award in Sport is a unique opportunity to develop core skills that are valued so highly in employment. Skills such as leadership, communication, confidence, working with others and meeting deadlines are all taught while attaining a GCSE equivalent sports qualification. You can use this qualification to move to post 16 study of BTEC Level 3, A Levels and higher educational degree courses at University level. The qualification is ideal if you would like to pursue a career in the sport and leisure industry including sport development, sport performer and coaching, PE teaching or working in the health, fitness and exercise industry.

The course is organised into 3 units -

Unit 184: Contemporary Issues in Sport - R184: Contemporary issues in sport This is assessed by an exam. By completing this unit you will understand a range of topical and contemporary issues in sport, including learning about participation levels and barriers to completing sporting activities. You will also learn how participation is impacted by the promotion of values and ethical behaviour, about the role of high-profile sporting events, the role of national governing bodies and how technology is used in within sport.

Topics include:

- o Issues which affect participation in sport
- o The role of sport in promoting values
- o The implications of hosting a major sporting event for a city or country
- o The role National Governing Bodies (NGBs) play in the development of their sport
- o The use of technology in sport.

Unit 185 : Performance and Leadership in Sports activities -

In this unit you will have an opportunity to develop your skills both as a performer in two different sporting activities, and as a leader, developing a range of transferable skills. You will work both independently and as part of a team, including communicating with team mates as well as being in front of an audience when you perform. You will perform under pressure, both as a participant and as a leader, and will use your initiative to solve problems and make decisions. Finally, you will deal with rapidly changing conditions and situations.

Topics include:

- o Key components of performance
- o Applying practice methods to support improvement in a sporting activity
- o Organising and planning a sports activity session
- o Leading a sports activity session
- o Reviewing your own performance in planning and leading a sports activity session.

PE – CNAT SPORT STUDIES

Unit R186: Sports and the Media

This is assessed by a set assignment. In this unit you will understand the different sides of a range of media sources how rapid development in technology is enabling sport to be viewed, replayed and discussed whenever and wherever the spectator wants. You will then develop your ability to evaluate and interpret the different ways in which sport is represented by the media.

Topics include:

- o The different sources of media that cover sport
- o Positive effects of the media in sport
- o Negative effects of the media in sport.

HOW IS THE COURSE ASSESSED?

The grade awarded is worth an equivalent score to a GCSE. The full range of points can be awarded from a grade 1 to a grade 8.5.

Unit R184 - is assessed with a 1 hour 15 minute exam and is scored out of 70 marks based on the learning aims. The exam is split into two sections – Section A is short answer questions. Section B includes short to medium answer questions.

Unit R185 – this unit contains coursework with several assignments being set that have strict deadlines. These assignments could be in the form of presentations, written assignments, leaflets or posters. Performance is also observed and assessed practically.

Unit R186 - this unit contains coursework with several assignments being set that also have strict deadlines. These assignments could be in the form of presentations, written assignments, leaflets or posters.

RECOMMENDED RESOURCES & SUPPORT:

<https://www.ocr.org.uk/qualifications/cambridge-nationals/sport-studies-level-1-2-j803-j813/textbooks/>

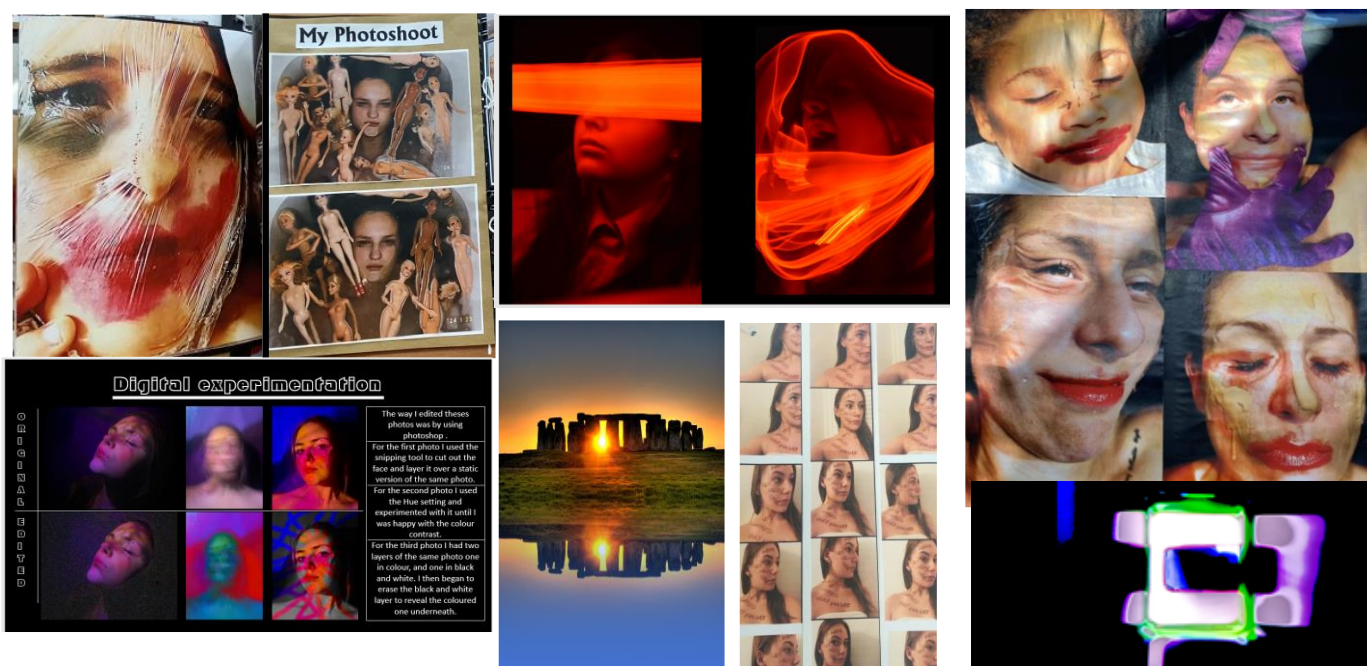
LEAD TEACHER CONTACT: Sam Wilson swilson@purbrook.hants.sch.uk

GCSE PHOTOGRAPHY

SYLLABUS: Photography (lens based)
EXAM BOARD: AQA
EXAM BOARD WEBSITE : <http://www.aqa.org.uk/subjects/art-and-design>

WHAT WILL PUPILS STUDY?

You will learn the compositional rules and how to effectively take professional looking photographs. You will also have access to a Nikon DSLR camera which you will get taught to use focusing to start with on shutter speed and the aperture. This will allow you to paint with light and freeze time. Units of work are based around 'composition and camera skill', briefs such as Everyday Objects, Decay, Past & Present, Concealment and portraits. All of these units will have artist study research pages, which will be presented in your portfolio.



HOW IS THE COURSE ASSESSED? EACH UNIT IS BASED ON 4 ASSESSMENT OBJECTIVES

Year 10 - 60% coursework portfolio, Year 11 - 40% 12 week controlled test



RECOMMENDED RESOURCES & SUPPORT:

LEAD TEACHER CONTACT: Fiona Cumbo - fcumbo@purbrook.hants.sch.uk

We would recommend that you also have your own SD card to use in the cameras, a memory stick to back up your work and possibly a camera at home but this is not essential to take part on the course.

Building up your own Pinterest inspiration will prepare you for future projects and post – 16 should you choose this option) Follow our school page and individual specialisms from the links below:

<https://www.pinterest.co.uk/martinw0617/> Instagram: Adtandphotographyatpps

GCSE SOCIOLOGY

SYLLABUS: GCSE Sociology

EXAM BOARD: Eduqas GCSE (9-1)

EXAM BOARD WEBSITE: <https://www.eduqas.co.uk/qualifications/sociology/gcse/>

WHAT WILL PUPILS STUDY?

The WJEC Eduqas GCSE in Sociology is designed to foster in learners an understanding and critical awareness of the social world around them. The specification focuses on the importance of social structure in explaining social issues. Learners will be encouraged to explore and debate contemporary social issues to enable them to challenge taken-for-granted assumptions and to question their everyday understanding of social phenomena. By following this course, learners will develop their own sociological awareness through active engagement with the contemporary social world. This specification will develop learners' ability to think sociologically in relation to their experience of the social world around them so that they are able to play a positive, active and informed role in society.

SUBJECT CONTENT

In Component 1, learners will consider how human beings acquire their identity and examine the process of passing on culture from generation to generation and in diverse settings. Learners will be encouraged to contemplate how they acquire their individual identity. This theme is continued through a detailed study of two agents of socialisation: families and education, which will provide learners with a deeper, more theoretical understanding of the social world and an awareness that the process of socialisation is contested. Concepts and theories used throughout Component 1 will be applied to an understanding and analysis of the topic areas in Component 2. In Component 2, learners will enhance their awareness of the social world through an examination of social structures and their influence on human behaviour. Learners will also develop an understanding of the nature and extent of inequality and will examine competing theories on the causes of inequality through a study of the ideas of the classical sociologists, and a more detailed study of crime and deviance. In applied methods of sociological enquiry, learners are encouraged to develop their understanding of the research process by studying the stages in carrying out research and in interpreting data.

HOW IS THE COURSE ASSESSED?

Component 1: Understanding Social Processes Written examination: 1 hour 45 minutes 50% of qualification 100 marks This component focuses on the themes of socialisation, identity and culture. Learners study the key concepts and processes of cultural transmission, including socialisation and the acquisition of identity, and develop these through detailed study of families and education.

Component 2: Understanding Social Structures Written examination: 1 hour 45 minutes 50% of qualification 100 marks . The focus in this component is on social differentiation, power and stratification. This includes the theme of power, issues of social order and social control, studied through crime and deviance. Learners also study applied methods of sociological enquiry.

RECOMMENDED RESOURCES & SUPPORT :

LEAD CONTACT: Emma Bolton - ebolton@purbrook.hants.sch.uk WJEC

EDUQAS GCSE SOCIOLOGY TEXTBOOK ISBN: 978-1-911208-20-4

Wednesday 10th March 2025

Year 8 Options Assembly

Monday 17th to Friday 28th March 2025

Taster Sessions

Thursday 3rd April 2025

Options Fair for all Year 8 pupils and parents

Friday 25th April 2025

Deadline for completion of options form

